



APhA-ASP August GBM

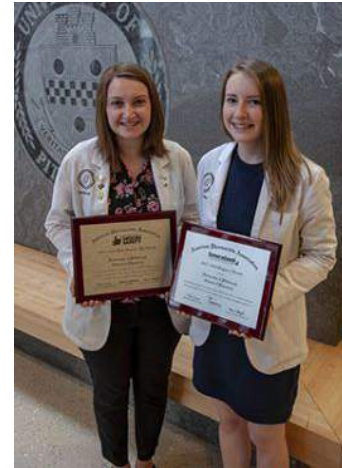
Welcome back, everyone!

What is APhA-ASP?

- **Collective voice of student pharmacists at PittPharmacy and nationally**
- **Opportunities for patient care, leadership development, and more!**
- **It is inclusive of pharmacists from all practice settings, including community, health systems, academia, research, industry, etc.**
- **We are the umbrella organization**

Recent Achievements

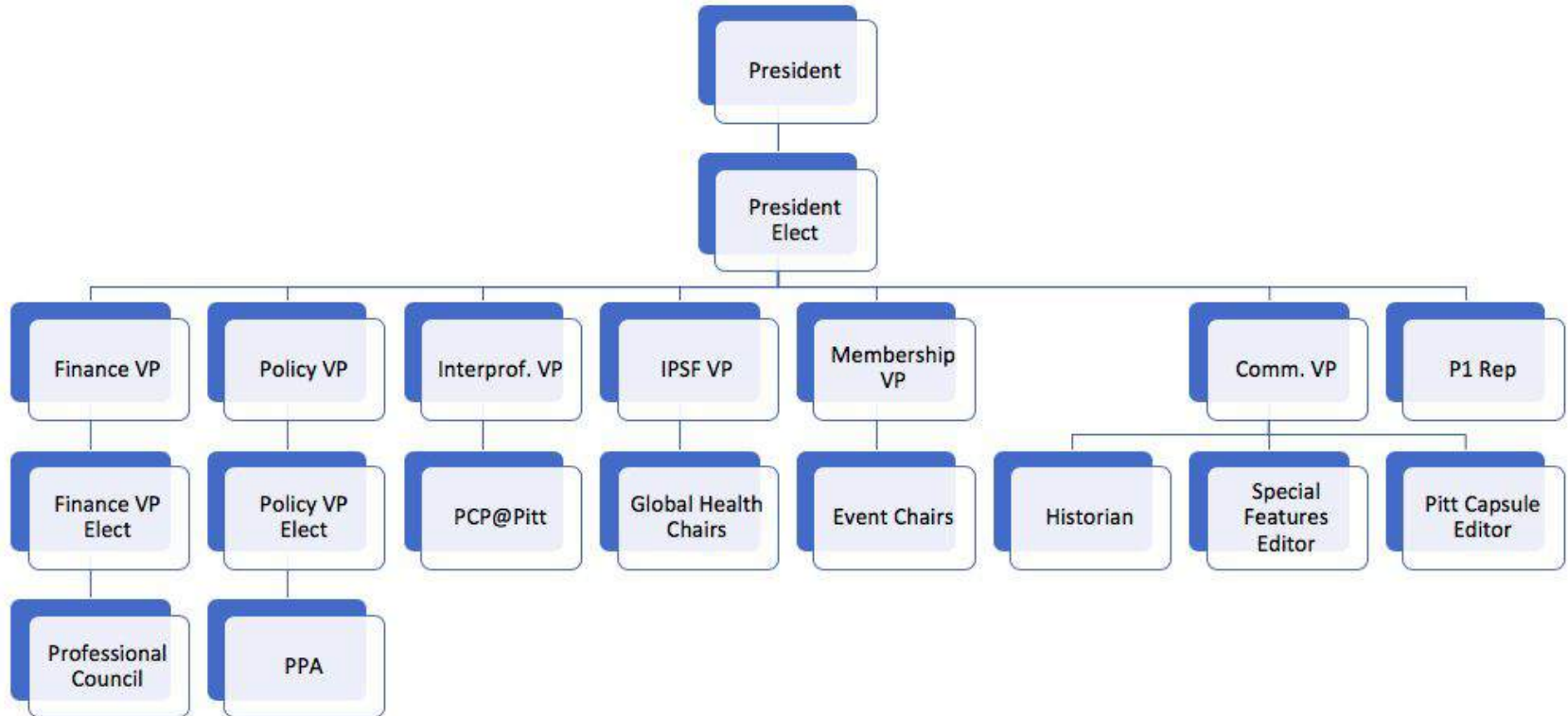
- **First Runner up of the 2017-2018 OTC Medicine Safety National Award**
- **2017-2018 GenerationRx Region 2 Award**
- **2018 APhA-ASP Outstanding Dean**



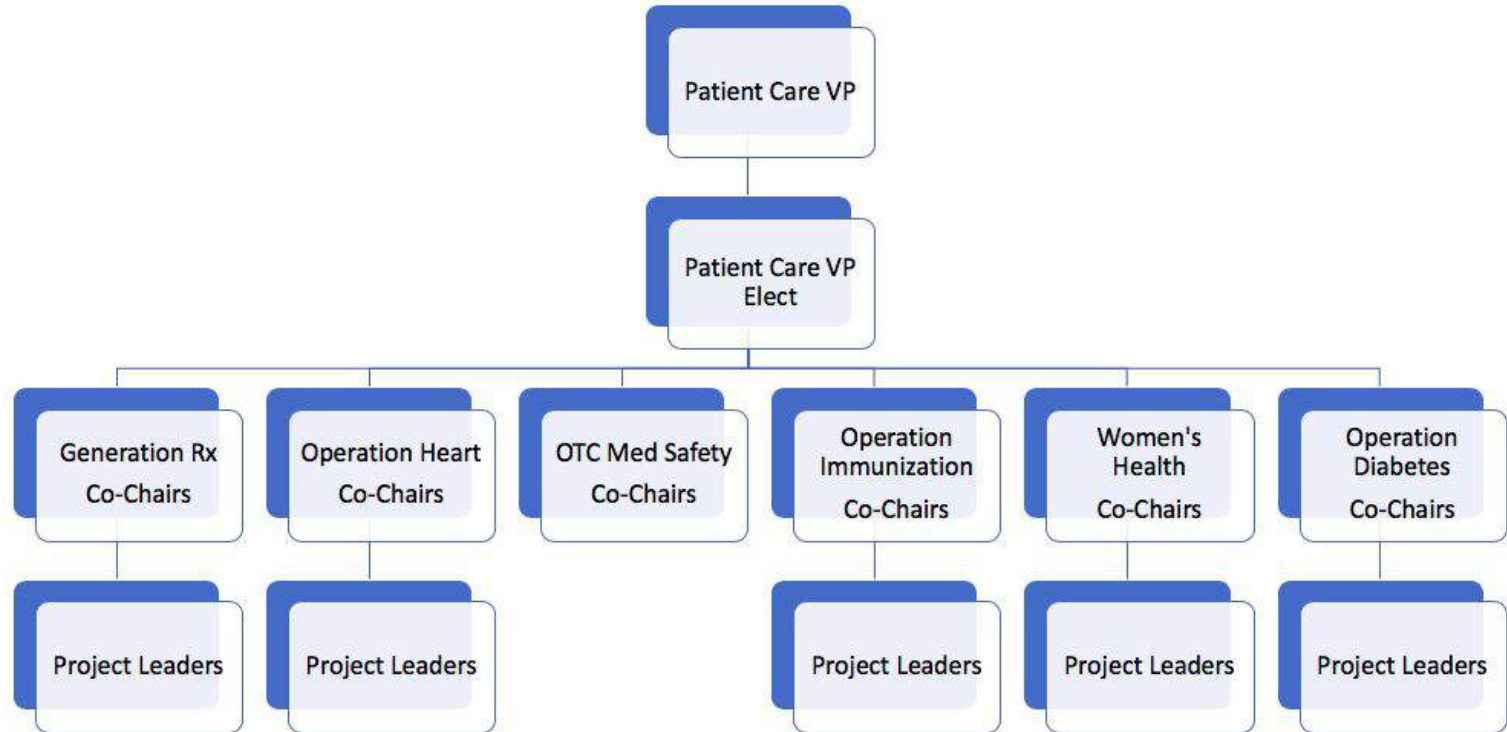
Membership Benefits

- Professional Development → through CV Workshops, unique internship experiences meetings, ARCO round tables, Leadership Retreats, networking at regional and national meetings
- Leadership → there are many opportunities for student pharmacists of any year to become involved and earn a leadership position
- Awards and Scholarships → you can apply through the APhA Foundation
- Access to Publications → *APhA Drug Info Line, JAPhA, Pharmacy Today, Student Pharmacist*

Our Chapter Structure



Our Chapter Structure



President and President-Elect
Haley Fribance (P3)
Brooke Kulusich (P2)

pitt.aphaasp.eboard@gmail.com

P1 Representative

Ex-officio member of APhA-ASP E-Board

Responsibilities include:

- Communicating to P1 class information about ongoing and upcoming APhA-ASP events
- Assisting President-Elect with planning and implementing leadership retreats, projects, and other events
- Generating P1 interest and involvement in APhA-ASP
- Representing P1 perspective at E-Board meetings

Interested?

Email Brooke Kulusich at bek69@pitt.edu for more information about the application and interview process

Patient Care

Leia Stephenson (P3)

Yihan Li (P2)



Patient Care GBM
Tuesday, September 10
@12 PM in Salk 402



Hailey Mook (P3)
Amanda Cremeans (P2)

hnm14@pitt.edu

pittppa@gmail.com



Policy and Advocacy

- Keep the chapter up-to-date on important legislation
- Speak on behalf of the chapter during regional and national meetings
- Legislative Week in October
- P1 Representative
- ACPA Picnic: Wednesday 9/4
 - Free to all students!

PPA GBM
Thursday, August 29
@12 PM in Salk 402





Interprofessional

Emma Haught (P3)

ejh76@pitt.edu

Interest Meeting
Thursday, September 12
@12 PM (room TBD)

Work to increase interprofessional collaboration

Open to all health professional students

GPSG Welcome Back Happy Hour at Hofbräuhaus
on Tuesday, September 3 @7 PM

Case conferences (October 15 and November 4)

Trivia Nights

IPSF

Thai Nguyen (P3)

tqn5@pitt.edu

Interest Meeting
Thursday, September 12
@12 PM (room TBD)

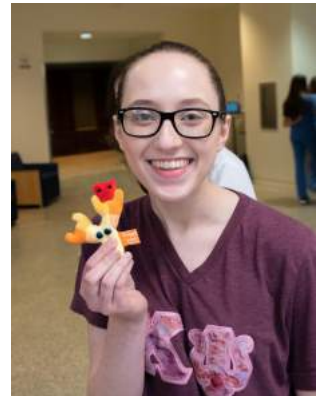
Student Exchange Program

- Over 60 countries
- Pre-application due in early November

Pictured on the right. Francisca Gonçalves Mastrado Inegrado em Ciências Farmacêuticas Universidade de Coimbra.

National and International Health Awareness Days

Heart, Diabetes, Antibiotics, etc.!



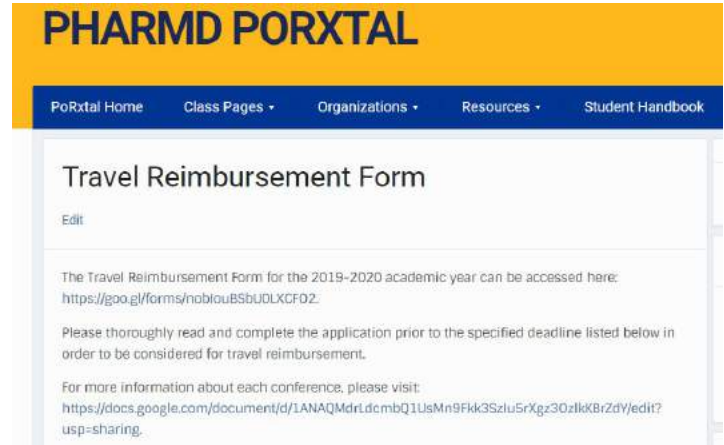
Finance

Cindy Jiang (P3)

Jennifer Zhang (P2)

cij3@pitt.edu, jez25@pitt.edu

pitt.profouncil@gmail.com



Make sure to fill out the google form!

1. Go to Porxtal (students.pharmacy.pitt.edu)
2. Resources tab
3. **Travel Reimbursement Form**
 - a. All deadlines are listed, do not miss it!
 - b. Conference descriptions are posted

MUST BE AN APHA-ASP CHAPTER MEMBER

MUST HAVE A W-9 ON FILE WITH SUZANNE

Membership

Danielle Weaver (P3)

drw67@pitt.edu

Interest Meeting
Thursday, September 12
@12 PM (room TBD)

Organizes chapter social events
and promote membership
participation and involvement

- Back-to-School Picnic
- Welcome Back Party
- American Pharmacist Month
- Pharmacy Week
- End of the Year Party
- Other fun activities



APhA-ASP Houses

NEW THIS YEAR!

To encourage student involvement and develop community

Overview

- 4 Houses (red, green, blue, yellow)
 - All members randomly assigned a house
- Earn points for attendance at events
 - Numerous ways to earn points
- House with the most points wins a “cash prize”
 - Monthly member prizes

Upcoming Events:

- “House Prescribing”
 - Friday, September 13 @12 PM
 - Free ice cream will be provided
- House Rep Elections
 - October GBM on Wednesday, Oct 2 @12 PM



Communications

Ashley Yao (P3)

amy51@pitt.edu

Interest Meeting
Thursday, September 12
@12 PM (room TBD)

Coordinates internal and external public relations efforts through social media platforms

APhA-ASP Social Media

- Facebook @PittAPhA
- Instagram @pittaphaasp



Pitt Capsule

- Monthly school-wide newsletter
- Stay up-to-date on our organizations

Dean's Theme 2019

GenerationRx

Safe medication practices for life.



- One of the six APhA-ASP Patient Care Operations is chosen for the entire school to focus on
- We ask the student organizations to come up with innovative and creative ideas to better reach our community and provide care to our patients under the chosen operation
- Generation Rx deals with educating individuals of all ages about the potential dangers of misusing prescription medications

Fall Leadership Retreat

- **Date TBD**
- **Dinner will be provided**
- **Guest Speaker**
- **Shark Tank style presentations given by organizations about their upcoming Dean's Theme events**



Midyear Regional Meeting

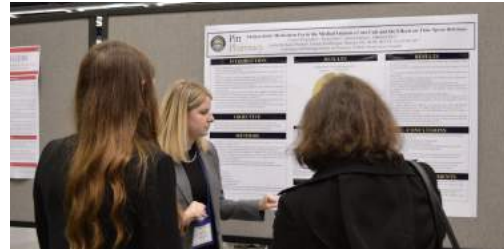
- Hosted by **Temple University** this year in **King of Prussia, PA** on October 25-27
- Only meeting in the United States held specifically for student pharmacists
- Great first conference for student pharmacists, because it is similar to the larger conferences just on a smaller scale
- Leadership development and networking with fellow students



- Create policy initiatives
- Explore career opportunities with potential employers
- Celebrate the achievements of other chapters within our regions

APhA2020 Annual Conference

- **March 20-23** in National Harbor, MD, just minutes from Washington, DC
- Only event that unites pharmacists from various experience levels and practice settings
- 6,000+ attendees from across the nation
- Poster presentations by our student pharmacists
- Amazing opportunities to network on a national level



How to Join

- **Membership Drive starts today!**
 - **Dues: \$25**
- **National dues are actually \$45, but PittPharmacy pays \$20 of this amount for each student**
- **Checks or cash payable to University of Pittsburgh**
- **Put your completed membership slip with your check/cash attached in the box in Student Services on the second floor by Friday, September 20**

Upcoming Meetings

Mark Your Calendars!

Patient Care GBM
Tuesday, September 10
@12 PM in Salk 402



PPA GBM
Thursday, August 29
@12 PM in Salk 402



Interest Meeting
Thursday, September 12
@12 PM (room TBD)

IPSF
Interprofessional
Membership
Communications