



# Student National Pharmaceutical Association

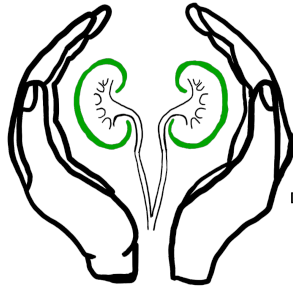
2018 - 2019 Elected Positions

---

MENTAL \* HEALTH



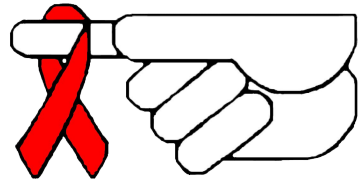
CHRONIC KIDNEY DISEASE



# Elected Positions

Graduate Executive Board Positions:

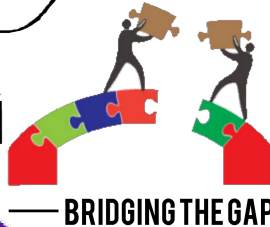
- President-Elect (Must be P1)
- Diabetes Initiative Chair (P1 or P2)
- Operation Immunization Initiative Chair (P1 or P2)
- Chronic Kidney Disease Chair (P1 or P2)
- Remember the Ribbon (HIV/AIDS) Initiative Chair (P1 or P2)
- Legislative Initiative Chair (P1 or P2)
- Power to End Stroke Initiative Chair (P1 or P2)
- Mental Health Initiative Chair (P1 or P2)
- Dean's Theme Chair (P1 or P2)



REMEMBER  
THE RIBBON



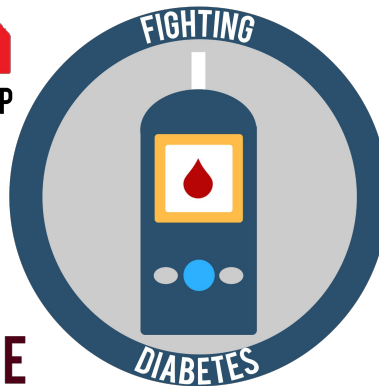
OPERATION  
IMMUNIZATION



BRIDGING THE GAP



POWER TO  
END STROKE





PittPharmacy

Current President-Elect: Kathy Monangai  
([kem173@pitt.edu](mailto:kem173@pitt.edu))

# President-Elect

Two-year commitment, must be taken on by a current P1 pharmacy student

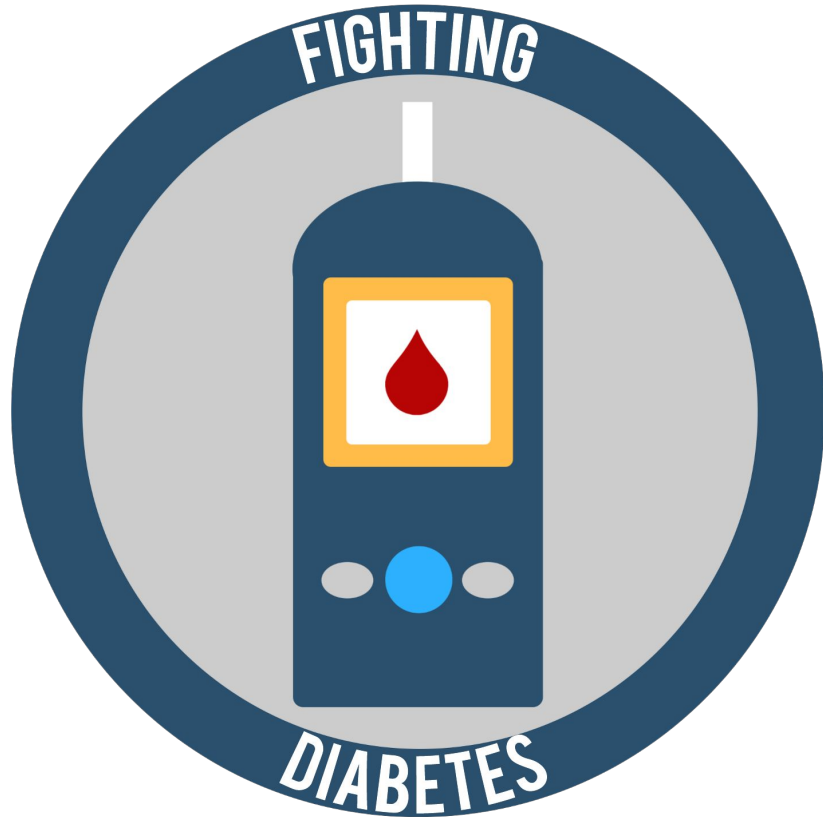
- Learn under the mentorship of current President to prepare for their next role
- Assist executive board and initiative chairs with their duties as necessary
- Attend Regional and National meetings to represent our chapter as a Delegate
- Support general body meeting and event planning for the initiative chairs



# Initiative Chair Positions

One-year commitment, must be taken on by a current P1 or P2 pharmacy student

- Responsible for providing direct outreach to patients and/or healthcare providers with some of the proposed guidelines
- Participate in monthly conference calls with the National Officer of their respective initiative for national updates
- Maintain correspondence with the National Office and participate in national level events



Current Chair: Olivia Fritz ([olivia.fritz@pitt.edu](mailto:olivia.fritz@pitt.edu))

# Fight Diabetes Initiative Chair

- Direct outreach events should include:
  - Distribution of patient information related to diabetes (pamphlets, printouts, etc)
  - Screenings (blood glucose, A1C, diabetic foot screenings)
  - Medication review or insulin technique education
  - Seminar/lecture to chapter membership or patients



Current Chair: Rachel Young ([rdy5@pitt.edu](mailto:rdy5@pitt.edu))

# Operation Immunization Initiative Chair

- Coordinate the annual Falk Flu Clinic
- Direct outreach events should include:
  - Distribution of patient information related to immunization updates (pamphlets, printouts, etc.)
  - Provision of available immunization shots for patients populations
  - Seminar/lecture to chapter membership or patients

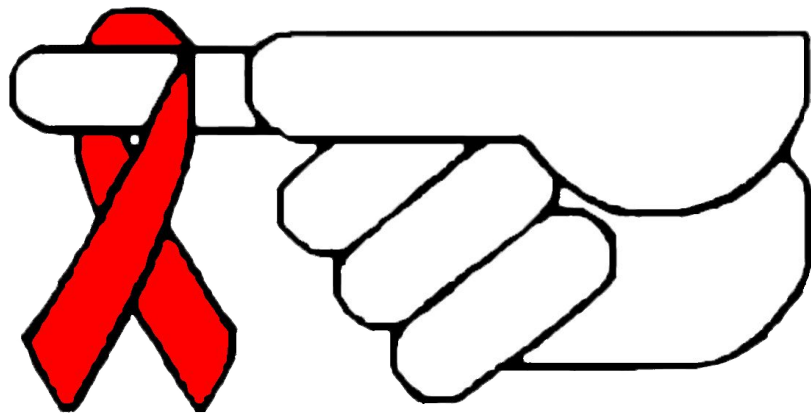
## Chronic **Kidney** Disease



Current Chair: Neha Poladi ([nep34@pitt.edu](mailto:nep34@pitt.edu))

# Chronic Kidney Disease Initiative Chair

- Direct outreach events should include:
  - Distribution of patient information related to CKD (pamphlets, printouts, etc.)
  - Questionnaire screening (screening for history, risk factors, past medical history) plus blood pressure screenings
    - Medication review
    - Seminar/lecture to chapter membership or patients



REMEMBER  
**THE RIBBON**

Current Chair: Katie Halza ([kgh16@pitt.edu](mailto:kgh16@pitt.edu))

# Remember the Ribbon (HIV/AIDS) Initiative Chair

- Direct outreach events should include:
  - Distribution of patient information related to HIV/AIDS (pamphlets, printouts, etc.)
  - Provision of local HIV/AIDS testing and/or treatment locations
  - Medication review and counseling
  - Seminar/lecture to chapter membership or patients





Current Chair: Danielle Nichols ([dmn24@pitt.edu](mailto:dmn24@pitt.edu))

# Legislative Initiative Chair

- Direct outreach events should include:
  - A letter writing campaign to educate legislators, raise concerns, and offer potential solutions for topics pertaining to healthcare reform
  - Provision of a voter registration drive with additional information on how citizens can become more involved at a local and national level
    - Distribution and presentation of educational materials
  - Host or participate in a state or national legislative event that reflects the actions of the profession of pharmacy



Current Chair: Joanna DeAngelis  
([jld161@pitt.edu](mailto:jld161@pitt.edu))

# Power to End Stroke Initiative Chair

- Direct outreach events should include:
  - Distribution of patient information related to stroke prevalence and protocols to follow in incidences of a stroke
  - Blood pressure screenings
- Medication review and counseling
  - Heart health activities
- \_\_\_\_ - Seminar/lecture to chapter membership or patients

# MENTAL HEALTH



Current Co-Chair(s): Melanie Umbaugh  
([msu1@pitt.edu](mailto:msu1@pitt.edu)) and Jessica Mattox  
([imm363@pitt.edu](mailto:imm363@pitt.edu))

# Mental Health Initiative Chair

The Newest National Initiative Chair!

- Direct outreach events should include:
  - Distribution of patient information related to mental health prevalence, general wellness, mental health awareness, and stigma towards mental health (pamphlets, printouts, etc.)
  - Provision of local mental health services to patients
- - Seminar/lecture to chapter membership or patients.



PittPharmacy

Current Chair: Funto Babalola ([olb13@pitt.edu](mailto:olb13@pitt.edu))

# Dean's Theme Chair

One-year commitment, must be taken on by a current P1 or P2 pharmacy student

- Work with chapter members to brainstorm events related to our organization's subtopic within the respective school year's Dean Theme
- Participate in the PLS/APhA Fall and Spring Leadership Retreats to work with other pharmacy organizations



# Undergraduate Elected Positions

Available Executive Board Positions:

- Vice President (Incoming P1)
  - Treasurer (Incoming P1)
  - Secretary (Pre-Pharmacy Student)
  - Historian (Pre-Pharmacy Student)
  - Undergraduate Liaisons (Two  
Pre-Pharmacy Students)
-



PittPharmacy

Current Vice President: Hailey Mook  
([hnm14@pitt.edu](mailto:hnm14@pitt.edu))

# Vice President

One-year commitment, must be an incoming P1 pharmacy student

- Responsible for undergraduate pre-pharmacy student involvement
- Preside over undergraduate meeting with undergraduate liaisons
- Assist executive board and initiative chairs with their duties as necessary
- Support general body meeting and event planning for the initiative chairs



Current Treasurer: Melanie Umbaugh  
([msu1@pitt.edu](mailto:msu1@pitt.edu))

# Treasurer

One-year commitment, must be an incoming P1 pharmacy student

- Coordinate disbursement of funds, maintain regular financial records, sign all checks and complete written reports regarding chapter funds
- Present budget reports that are given to our Professional Council per semester
- Collect graduate and undergraduate chapter dues to be submitted into the chapter account for Nationals



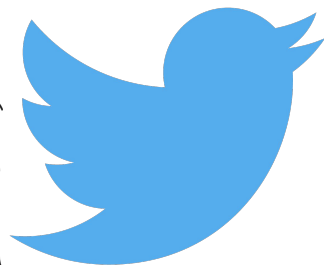
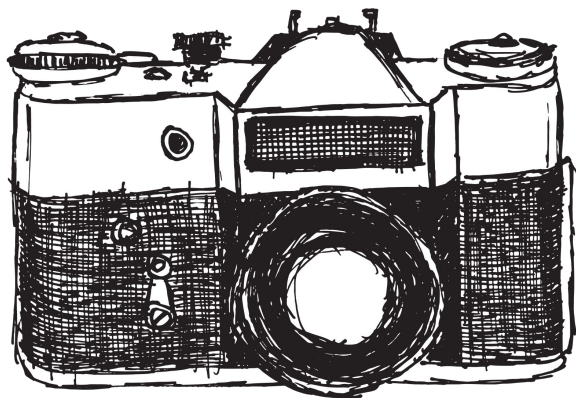
Current Secretary: Kaycie Gavin  
([kgg9@pitt.edu](mailto:kgg9@pitt.edu))

# Secretary

One-year commitment, must be a current undergraduate pre-pharmacy student

- Must be present at executive board meetings and general body meetings to record the information discussed
  - Responsible for disseminating meeting minutes to the executive board
  - Support initiative chairs as necessary
-



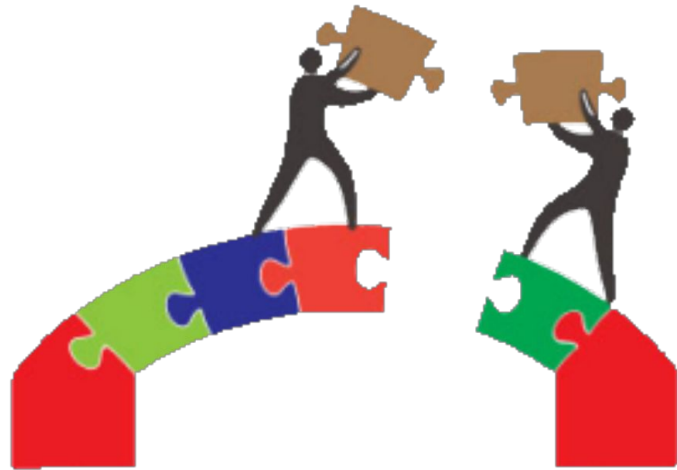


Current Historian: Josephine Kim  
([iyk10@pitt.edu](mailto:iyk10@pitt.edu))

# Historian

One-year commitment, must be a current undergraduate pre-pharmacy student

- Responsible for taking pictures and procuring photos from SNPhA chapter members after events
- Create scrapbook with chronological photos for the National meeting
- Manage social media accounts and keep them updated throughout school year



## — BRIDGING THE GAP

Current Undergraduate Liaisons: Caitie Lawrence ([cml117@pitt.edu](mailto:cml117@pitt.edu)) and Sheril Joseph ([ssj13@pitt.edu](mailto:ssj13@pitt.edu))

# Undergraduate Liaisons

One-year commitment, must be two current undergraduate pre-pharmacy students

- Serve as mediator between pharmacy and pre-pharmacy chapter members
- Collaborate with Vice President to lead undergraduate meetings and events
- Assist Historian to keep social media accounts updated during school year



# Questions?

Please contact any current  
executive board member!

Any questions about the  
election process can be  
directed to Kathy Monangai  
([kem173@pitt.edu](mailto:kem173@pitt.edu))

---

---

# Thank You!

See you at our elections general body meeting...

**Wednesday, April 4th, 2018  
at 6 PM in 456 Salk Hall**

---